



Whats App



Email

User Manual

C16

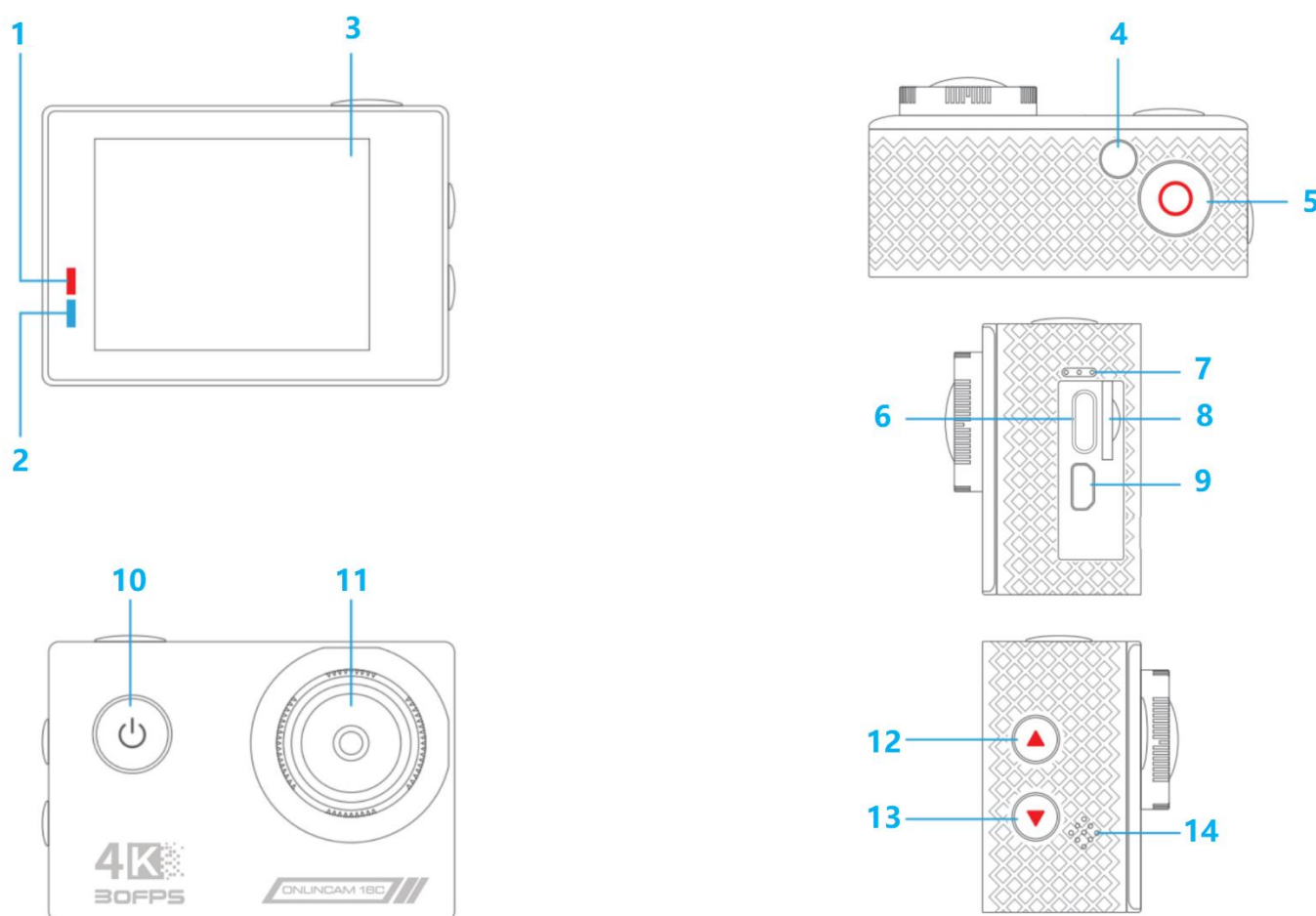
Made in China



Introduction

Action Camera is a high-definition digital motion video recording device, created to reach market demand. It has a wide variety of the leading features for digital video recording, photo shooting, audio recording with screen display and detachable battery. Best suitable for vehicle recording, outdoor sports, home security, diving and more related activities. Allowing you to enjoy the moments while capturing every scene anytime, anywhere.

Product Overview



- | | |
|----------------------------|--------------------------|
| 1. Charging Indicator | 8. Memory card Slot |
| 2. Working Indicator | 9. Micro HD Port |
| 3. 2.0-inch Screen | 10. Power / Mode Button |
| 4. WiFi Indicator | 11. Lens |
| 5. Shutter / Select Button | 12. Up / Previous Button |
| 6. Type-C Port | 13. Down / Next Button |
| 7. Internal Microphone | 14. Speaker |

Tips:

- ✧ Verify the camera is in **Video / Photo Mode**, Press shortly the **UP** button to turn on/off Wi-Fi.
- ✧ Verify the camera is in **Video Mode**, Press shortly the **Down** button to turn on/off audio record.

GETTING STARTED

HELLO

Welcome to your new camera. To capture video and photos, you need a micro SD card.

MICRO SD CARDS Use brand name memory cards that meet these requirements:

Micro SD / Class 10 or UHS-I rating / Capacity up to 8~ 64GB (FAT32)

To power ON:

Press and hold the **Power/Mode Button** for seconds to the screen on.

To power OFF:

Press and hold the **Power/Mode Button** for seconds to the screen off.

OVERVIEW

Turn camera ON and repeatedly press the **Mode Button** to cycle through camera modes and settings. The modes will appear in following order:



■ VIDEO MODE

Video Mode is the default mode when you turn on the camera.

In Video Mode, press Shutter button, the camera starts recording video, press Shutter button to stop recording video.

■ PHOTO MODE

Press Mode button once to switch to Photo Mode after you turn on camera. In Photo Mode, press Shutter button, the camera takes a photo.

■ VIDEO PLAYBACK MODE

Press Mode button several times to switch to Video Playback Mode. In Video Playback Mode, press the Up / Down button to scroll through the video files. Press Shutter button to open video in full-screen view. Press and hold the Up button for 3 seconds to delete the video.

■ PHOTO PLAYBACK MODE

Press Mode button several times to switch to Photo Playback Mode. In Photo Playback Mode, press the Up / Down button to scroll through the Photo files. Press Shutter button to open photo in full-screen view. Press and hold the Up button for 3 seconds to delete the photo.

■ VIDEO SETTING MODE

Press Mode button several times to switch to Video Setting Mode.

■ PHOTO SETTING MODE

Press Mode button several times to switch to Photo Setting Mode.

■ SYSTEM SETTING MODE

Press Mode button several times to switch to System Setting Mode.

CUSTOMIZING YOUR CAMERA

■ VIDEO SETTING

Video Resolution: 4K 30fps / 2.7K 30fps / 1080P 60fps / 1080P 30fps / 720P 120fps

Looping Video: Off/1Min./3Min./5Min.

■ PHOTO SETTING

Photo Resolution: 20M/16M/14M/12M

■ SYSTEM SETTING:

Language: English / Español / Deutsch / Italiano / Français / 简体中文 / 日本語

Volume: 0~10

Remote: On/Off

Car Mode: On/Off

Diving Mode: On/Off

Exposure: +2~-2

Date & Time: __Y__M__D 00:00:00

Stamp: On/Off

Upside Down: On/Off

Screen Saver: Off/30sec./1min./3min.

Power Off: Never/1Mins/5Mins

Format: YES/NO

Reset: YES/NO

FW Version:

PLAYBACK

■ Playing back on camera

1. Enter Video or Photo playback mode. If your SD card contains a lot of content, it might take a minute for it to load.
2. Press the **Up / Down Button** to scroll through the video or photo files.
3. Press **Shutter Button** to open video or photo in full-screen view.
4. To return to the thumbnails screen, press **Mode Button**.
5. To exit the gallery, press **Mode Button**.

■ Playing back on TV

1. Turn on the TV
2. Connect the Mini HDMI end to the port on camera and HDMI end to HDMI port on the TV
3. Select the right input source on the TV
4. Turn on the camera after a while, you can preview the camera from TV
5. Setting your camera into the video/photo playback mode
6. Select the desired file to playback

Notes:

1. If the camera is connected TV with HDMI cable, the camera do not support to take

videos or photo, only for Playback or Preview.

2. HDMI cable is not included in the standard package,you will need buy an extra HDMI cable.

■ Playing back on Computer

To play back your video and photos on a computer, you must first transfer these files to a computer. Transferring also frees up space on your micro SD card for new content. To offload files to a computer using a card reader (sold separately) and your computer' s file explorer, connect the card reader to the computer, then insert the micro SD card. You can then transfer files to your computer or delete selected files on your card. Note that you must use a card reader to offload photos or audio files.With this method, playback resolution depends on the resolution of the device and its ability to play back that resolution.

Notes:

1. This camera might not be compatible with the files from different solution camera or other device.
2. The quick time player is a good compatibility with MOV format video files. We strongly recommend using the quick time player player to play back video files on your computer.

■ Delete singe file on camera

1. Verify the camera is in Video or Photo Playback menu,If your micro SD card contains a lot of content, it might take a minute for it to load.
2. Press the **Up or Down Button** to locate the file you want to delete.
3. Press and hold the **Up Button** for seconds. The screen shows 'Delete Selected File? YES / NO' .
4. Press **Shutter Button**, the selected file will be deleted.

STORAGE/MICRO CARDS

This camera is compatible with 8GB,16GB,32GB,(**64GB FAT32 selected**)capacity micro SD,micro SDHC and micro SDXC memory card. You must use a micro SD card with a **Class 10** or UHS-I rating speed rating(**80M/S**) at least. We strongly recommend to use the branded memory cards purchased from regular channels for maximum reliability and stability during recording and in high vibration activities.

Notes:

- Please format the micro SD,micro SDHC and micro SDXC memory card on the camera

before using.

- Please restart the camera after formatting.
- Please insert the memory card in correct way . if not , the card slot maybe damage by the wrong way.

BATTERY

■ Charging the battery

- 1.Connect the camera to USB power supply (5V/1A commended).
- 2.The charging status light remains ON while the battery is charging.
- 3.The charging status light will turn OFF when the battery is fully charged.

Notes:

- Charging time: 4-hours for 5V 1A power supply
- Please make sure the camera is shuttled down while charging.
- Remove the battery before using as a dash camera and use 5V/1A brand-name car charger.
- Do not store in temperature above 140°F/60°C.
- Do not disassemble,crush,damage or dispose of in fire.
- Do not use swelling battery.
- Stop using the battery after immersed in water.
- please do no throw the camera or its battery to the garbage,find a specific recycling point for it.

Wi-Fi APP

The Wi-Fi App lets you control your camera remotely using a smart phone. Features include full camera control,live preview,playback and sharing of selected content and more.

■ Download and Install FUN DV app

Option 1:

Download the **FUN DV** App or to your smart phone from the Google Play or Apple App Store.

Option 2:

Scan the QR code below to download the **FUN DV** App or to your smart phone.



Android 7.0
or later



iOS 10.0
or later



Notes:

Google,Android,Google play,App Store and other marks are the trademarks of Google LLC.

■ Connect to the Wi-Fi App

1. Press the **Power/Mode Button** to power the camera ON.
2. Verify the camera in video mode: Press shortly the **Up/Wi-Fi Button** to turn on Wi-Fi,then the Wi-Fi icon and Wi-Fi SSID & password will show on of the screen.
3. Connect to the network called “**FUN DV**” in your smart phone ’ s Wi-Fi setting.
4. Enter the password” 12345678”
5. Launch the **FUN DV** App on your smart phone.
6. Press the **Up/Wi-Fi Button** again to turn off Wi-Fi.

REMOTE CONTROLLER

Place the Remote Control On Your Wrist and Acquiesce Ultra-convenient Control For Hiking,Biking, Skiing,Bungee and more while installing the camera on your Helmet or other place.

■ Remote Range: 5M

Verify the camera is in Video/Photo preview mode first, if the camera is set in Playback or Setting Menu, the camera can not receive the remote signal and can not be controlled by the remote.

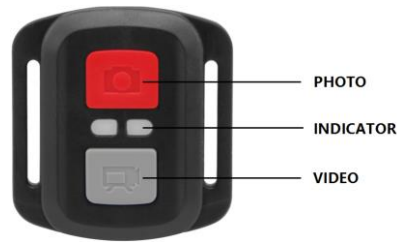
■ VIDEO

To start recording:

Press the Grey Video Button.

To stop recording:

Press the Grey Video Button again.



■ PHOTO

To take a photo:

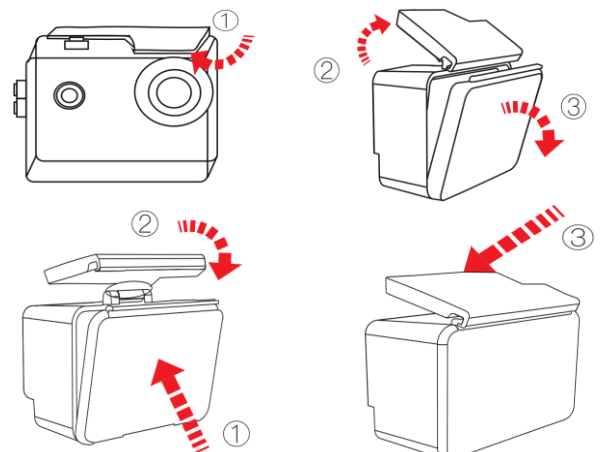
Press the Red Photo Button. The camera will emit a camera shutter sound.

WATERPROOF CASE

Specially designed for diving, surfing, snorkeling and other water sports activities. The waterproof case does not only offer greater waterproof protection to your camera, it also offers extra protection against dust, scratches and shocks. Light and easy to carry, excellent PMMA material endows it with high quality. With the use of the waterproof case, you can record activities even 30M under water and it won't damage the shooting effect, clear and vivid. Your movement and photographic effect won't be affected by anti-surf pressure. Convenient to link camera with other accessories mount through this waterproof case.

■ How to open the waterproof case:

- 1) Pick the black latch up on the top of the case.
- 2) Pull up the buckle of the case.
- 3) Open the back cover of the case.



■ How to close the waterproof case:

- 1) Please close the back door of the case.
- 2) Pull down the latch and lock it to the back door.
- 3) Press down the buckle.

Tips:

- Please tear the protective films on the waterproof case lens before shoot/record;
- To achieve better waterproof performance, the voice record within the waterproof case will be weakened.

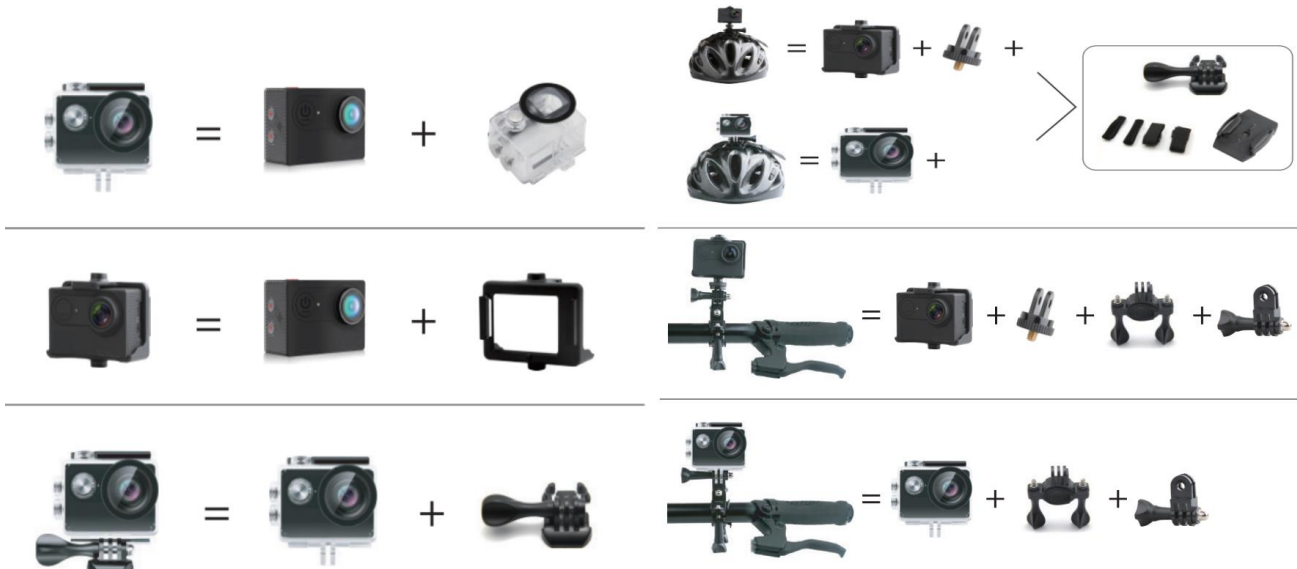
Notes:

- In order to capture a clear video or photo, please tear off the lens protection film of the waterproof shell before use, and protect well the lens window from scratch after use.
- Before sealing the waterproof case, keep the camera housing' s White Silicone Seal Ring clean, a single hair or grain of sand cause a leak. You can test by closing the case without inserting the camera. Submerge the case completely in the water for about a minute. Remove the case from the water, dry off its exterior with a towel, and then open the case. If the interior is dry,the case is safe for use under water.
- Before sealing the waterproof case, make sure the waterproof case is sealed well before use.If the white silicone sealing ring is found to be hardened, deformed or damaged, please stop using this water tank and replace the new waterproof shell in time
- Please dry it in time after use, otherwise the waterproof shell metal button will dust and reduce the waterproof performance. After use in in seawater or seaside, you will need to rinse the outside of the housing with fresh water and then dry. This will prevent corrosion of the hinge pin and salt buildup in the seal, which can cause failure. Do not flush the interior with water
- When use the camera with the waterproof in low temperature, such as Winter, Rainy Day, Underwater and so on, please do the anti fogging treatment so as to avoid the blurred video. It is recommended to add anti-fog film; insert the anti-fog film into the waterproof case to prevent the lens from fogging in low temperature or humid environment;
- Keep it safe from falling and dropping and high temperature above 80°C.
- Waterproof shell is vulnerable product, we strongly recommend ,according to the usage of the environment and frequency, to replace the waterproof shell in time.

Mounting Your Camera

Attach your camera to helmets, gear and equipment.

The following assembly methods are for reference only!



Notes:

- Our standard accessories are the basic version. If you need different types of accessories, you need to purchase them separately.
- With different types of accessories, the camera can be used in different occasions. Please purchase different types of accessories kit according to actual needs.
- Our cameras can be partially compatible with accessories from other brands such as GoPro..

SAFETY WARNINGS

- This is a 4K action camera, It is normal for the housing to exert heat under use. Don' t expose the product directly to high temperatures over 50°C.
- It require a name band Class10 or higher micro SD card,Format your SD card on the camera first before using.
- Keep it safe from falling and dropping.
- Do not place heavy objects on the camera.
- Keep it distance from any strong magnetic interference objects like electrical machine to avoid strong radio waves that might be damaging the product and affect the sound

or image quality.

- Keep the camera away from water and liquids (unless equipped with waterproof case). This may cause the the camera to malfunction.
- Don' t place your Micro SD card near strong magnetic objects to avoid data error or loss.
- Must remove the battery before using as a dash camera and use brand-name 5v/1A car charger.
- In case of overheating, unwanted smoke or unpleasant smell from the device, unplug it immediately from the power outlet to prevent hazardous fire.
- Keep it safety from children while on charging.
- Do not use the camera when it is low power.
- Do not use or turn off the camera while it is in charging.
- Stored the device in a cool, dry and dust free location.
- Do not attempt to open the case of the camera or modify it in any way,if the camera has been detached,the warranty will be void.

Specification could be subject to modification due to updating without notice, please regard the actual product as the standard form. If need the newest updated software,please contact our after sale service team!

CONTACT US

For any inquiries, issues or comments concerning our products, please send E-mail to the address below or call us. We will respond as soon as possible.

E-mail: cs@onlincam.com

Web: www.onlincam.com